



# The leading platform for integrated communication

AI-driven, secure and GDPR-ready video-, voice and chat solution that lives inside your collaboration tools.



by Felix Häusler

# Problem



**61%** of all work time is wasted\*

As **work communication** is  
*scattered across specialised applications.*

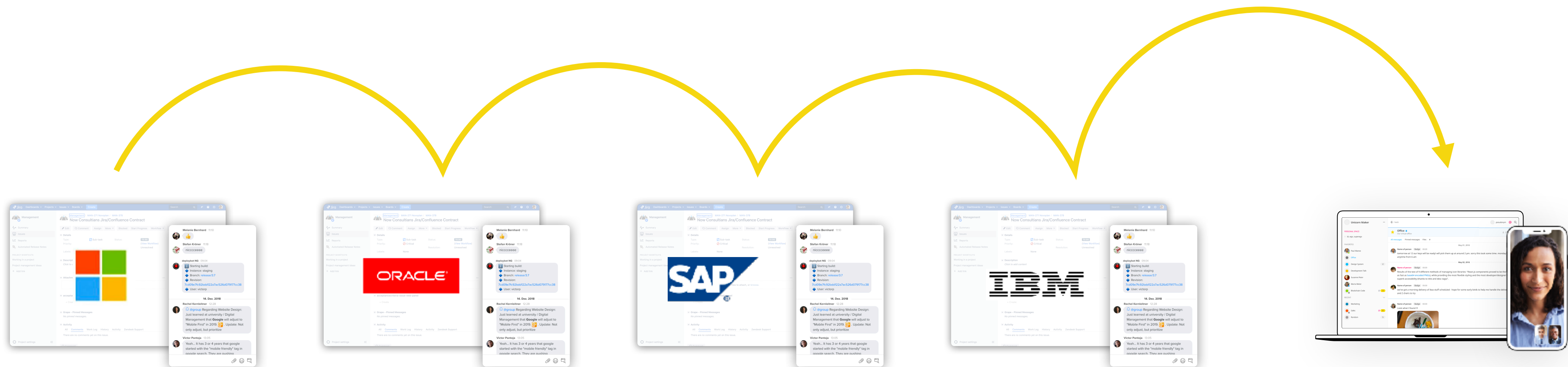


\*McKinsey Global - the social economy

# Solution



Communicate **fully integrated**  
*inside* the software you love.



# The new category



PAST

PRESENT

FUTURE

## SILOS

Standalone Chats that have no integrations.

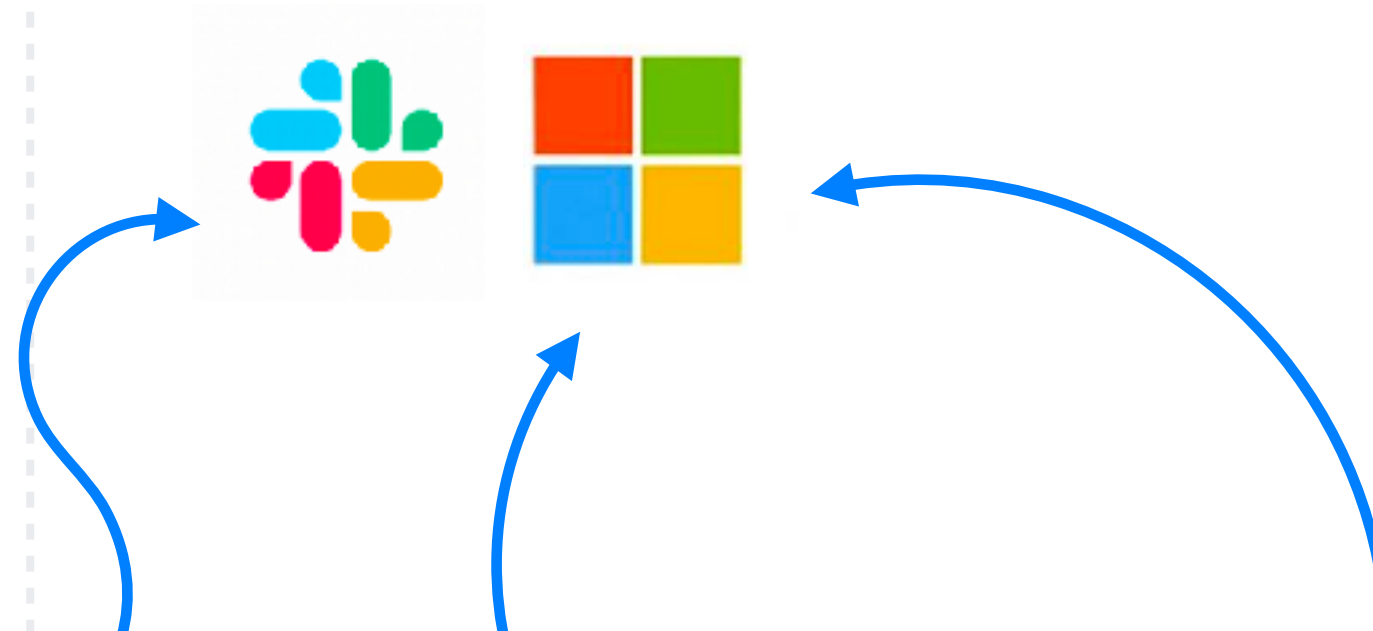
*Signal, Whatsapp, Threema, CISCO Spark, Skype f. b., etc.*



## SUITES

Chats in which you integrate, that sport their own toolsets.

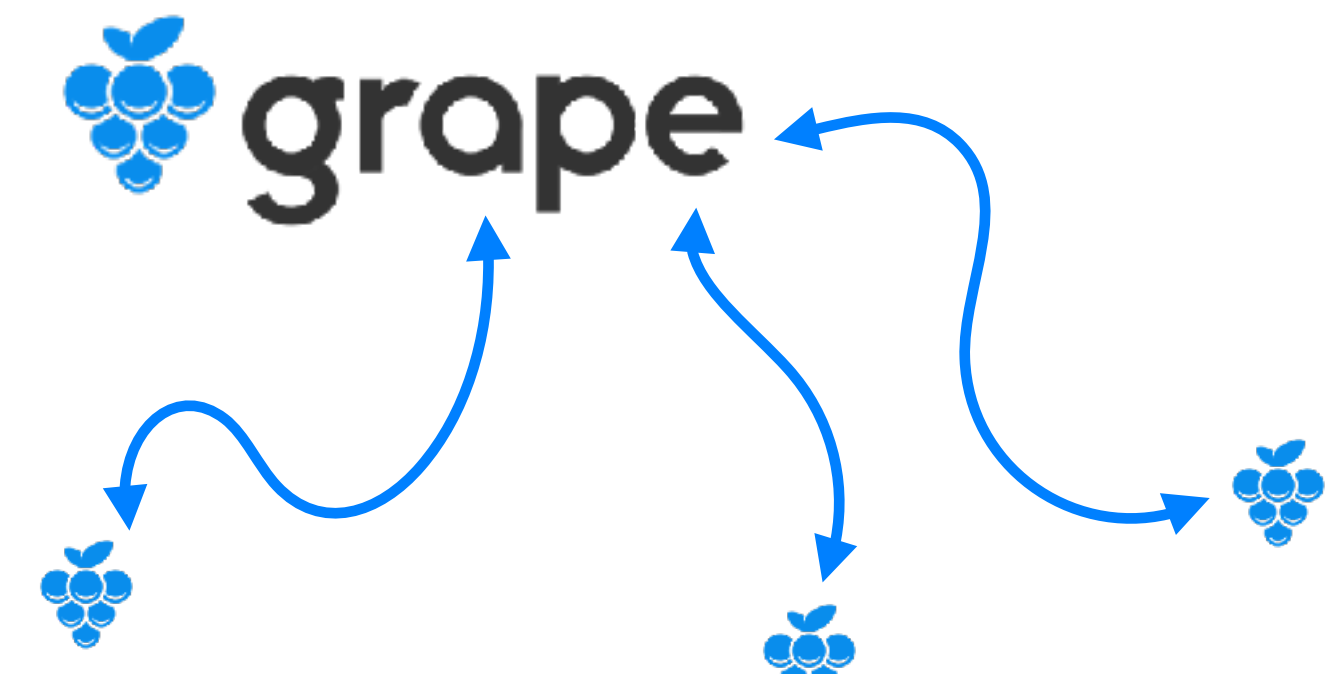
*Slack, Microsoft Teams, Hipchat, Mattermost, Rocket.Chat, etc.*



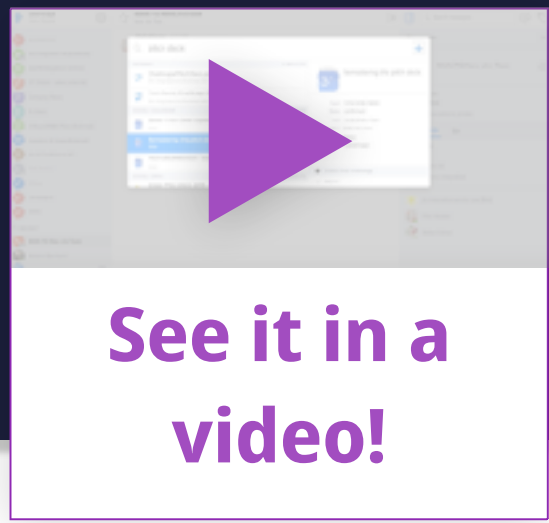
## LAYERS NEW

Chats that run INSIDE your existing software.

*Grape. Period.*



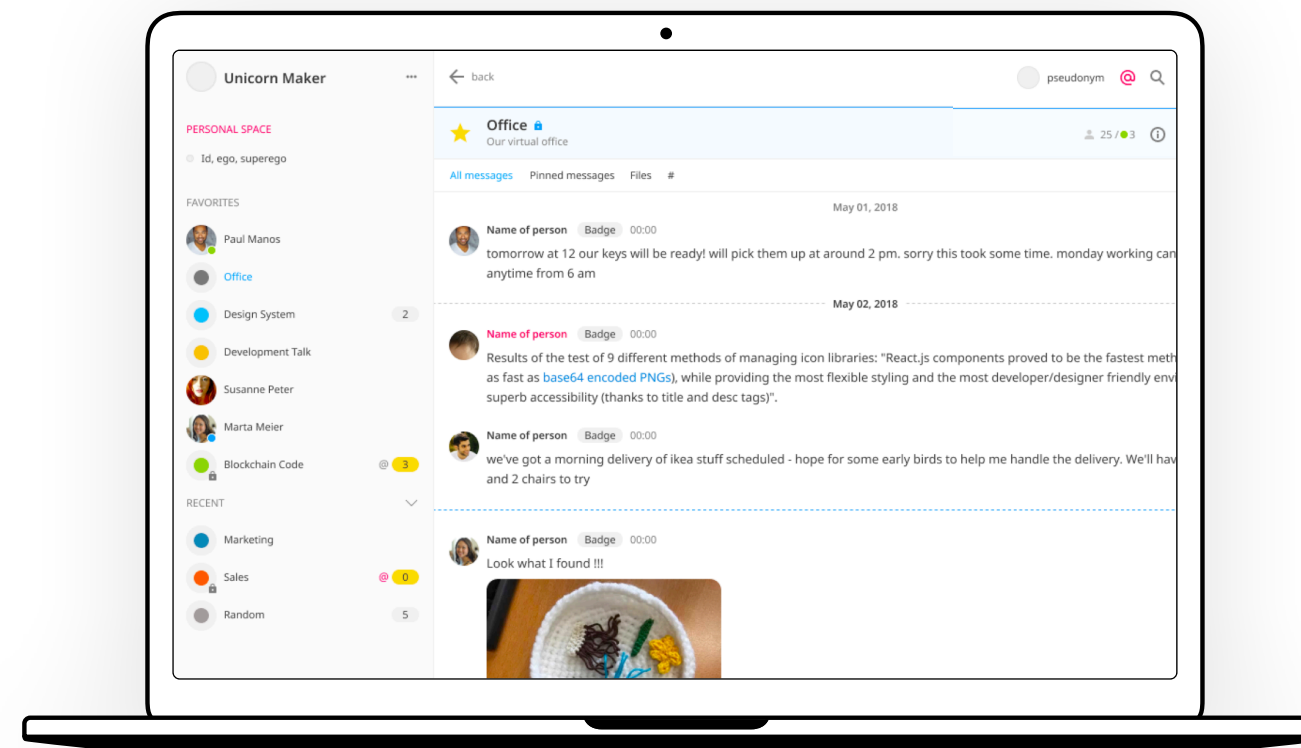
# Product - Omnipresent



A messenger that lives inside the work screens you look at every day.



Within Tools



Desktop



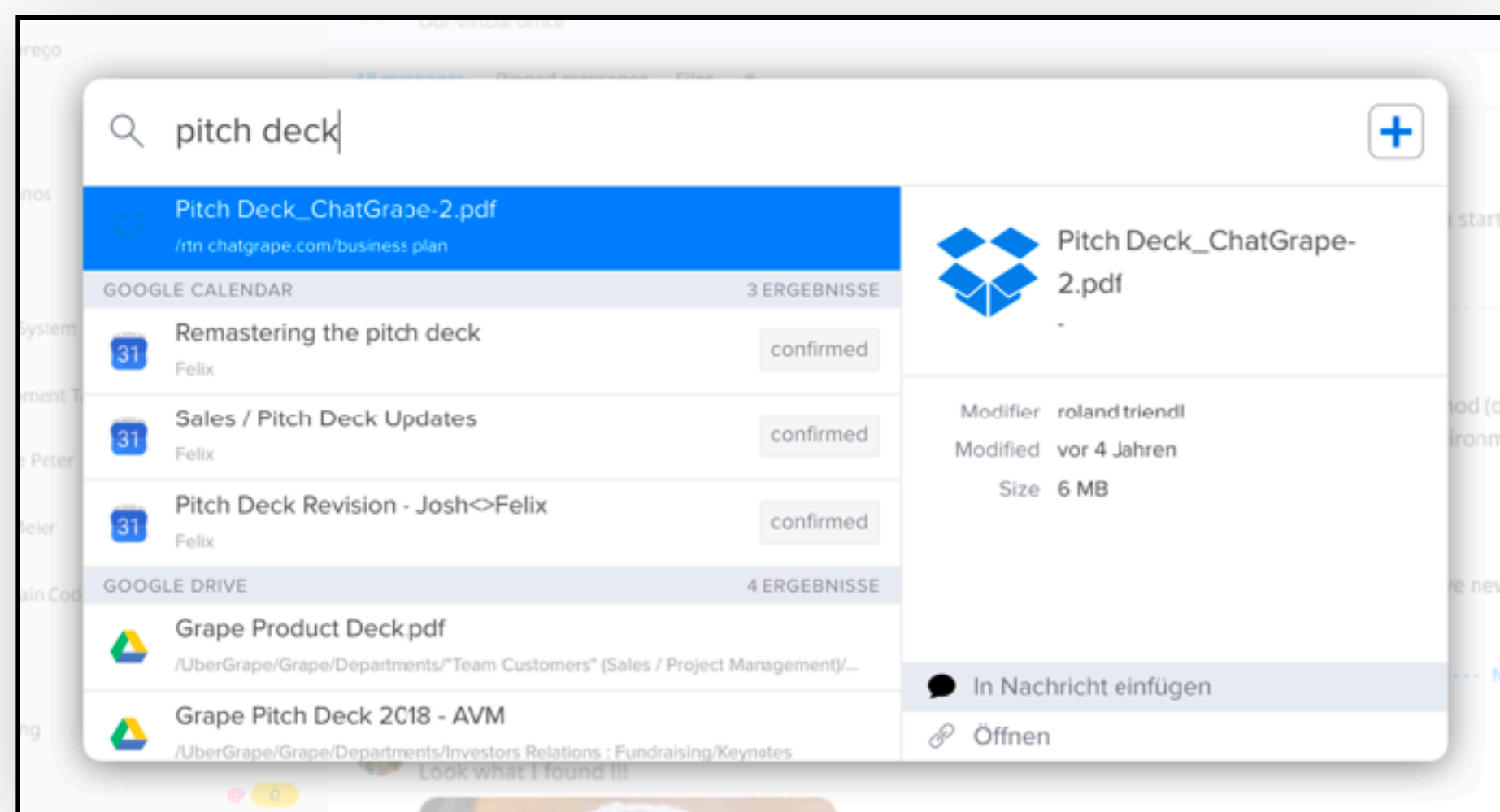
Phone

# Product - Deep Search



See it in a  
video!

A messenger that knows  
all your tools.

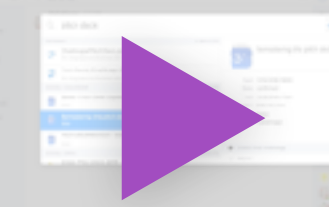


## Grape Search

Indexes all your data  
& communication

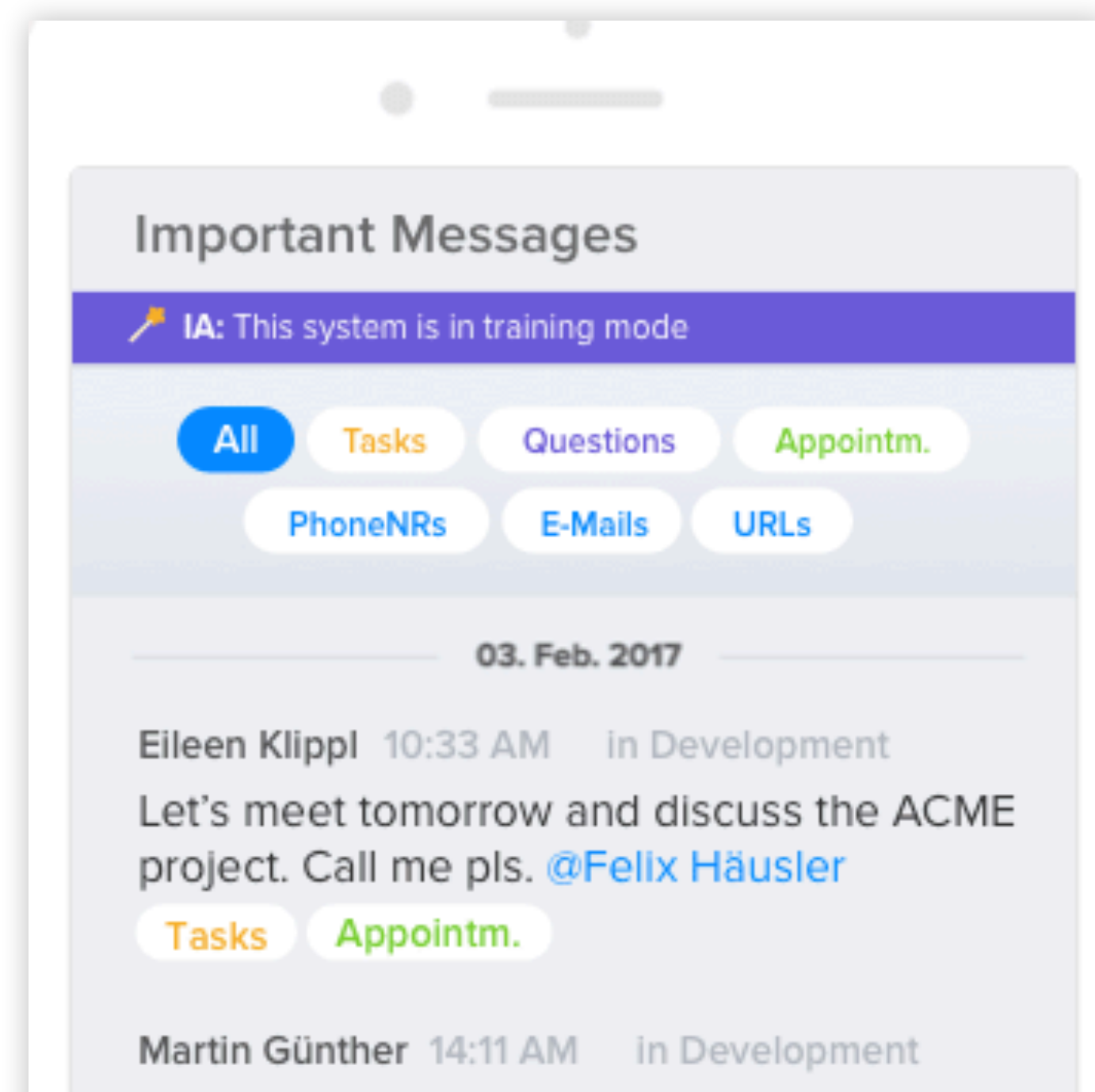


# Product - AI



See it in a  
video!

**A smart AI messenger  
that empowers you.**



**Natural Language  
Processing**

**An assistant that  
automates work.**



# Big Vision



The communication layer  
between humans and machines.

✓ **1) Integrate messaging.**

✓ **2) Understand machines.** 

✓ **3) Understand humans.** 

**4) Combine and scale it.**





**Thank you!**



**grape**



**Get in touch!**

Felix Häusler (CEO) - [fh@chatgrape.com](mailto:fh@chatgrape.com)

+43 650 80 81 581 - [grape.io](https://grape.io)