

GeoData for Jira ●●●●●

×
ATLASSIAN Community

Berlin – Brandenburg presentation
3. May 2021 19:00 – 3. May 2021 21:00 (CEST)

+++



Ivan **Lobotka**

Sales & Business consulting at EEA



Gold
Solution Partner



BOOT!Q

GeoData for Jira



Gold
Solution Partner



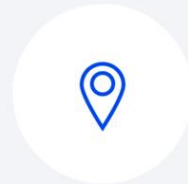
BOOT!Q

GeoData for Jira 

The **best** visual overview of your tasks



Overview



Visualization



Planning



GeoData for Jira





Customers who use our **GeoData for Jira** application



District of Bratislava–Nové Mesto – The Participatory Budget Office registers, handles suggestions from citizens in Jira and publishes official statements.



Professional company specializing in fire protection – Map of customer's installed measuring and fire extinguishing equipment.



Construction company – The aim was to have an overview of the constructions on which Baumit can supply material through architects, processors, investors and thus streamline the work of the sales team.

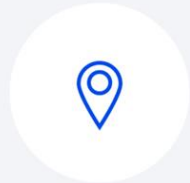


GeoData for Jira 

How it looks in real **Jira**



Overview

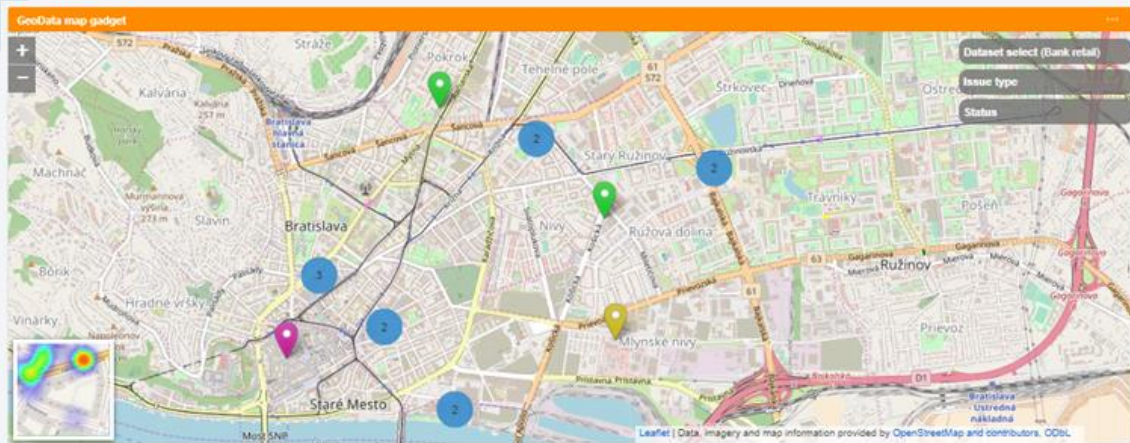


Visualization



Planning



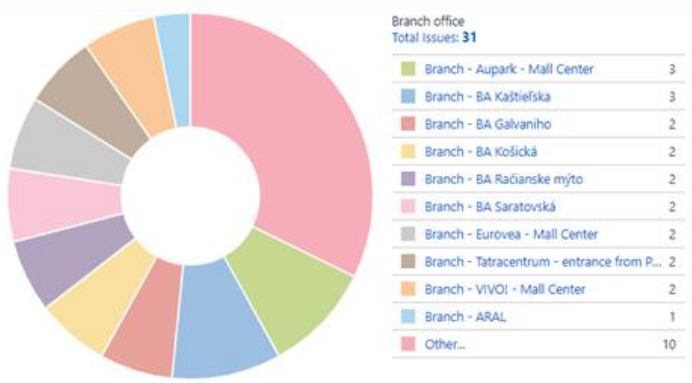


Filter Results: ATM Service

T	Key	Summary	Cash machines	Route planner
+	BANK-233	Planned maintenance - Bratislava shopping centres	<input type="checkbox"/> ATM - OC Galéria - Mall Center <input type="checkbox"/> ATM - OD Saratov - Mall Center <input type="checkbox"/> ATM - Eurovea - Main entrance - Mall Center <input type="checkbox"/> ATM - Aupark - Cinema <input type="checkbox"/> ATM - Bory Mall - Mall Center <input type="checkbox"/> ATM - AVION Shopping Park <input type="checkbox"/> ATM - Aupark - Center Mall - NAY entrance	Google route
+	BANK-232	Planned maintenance	<input type="checkbox"/> ATM - BA Mikuláša Schneidera-Trnavského <input type="checkbox"/> ATM - BA Ventúrska <input type="checkbox"/> ATM - BA Muchovo nám. <input type="checkbox"/> ATM - ROSUM <input type="checkbox"/> ATM - BA Pecná cesta <input type="checkbox"/> ATM - BA Romanova	Google route

1-2 of 2

Pie Chart: All cash machines



Filter Results: All cash machines

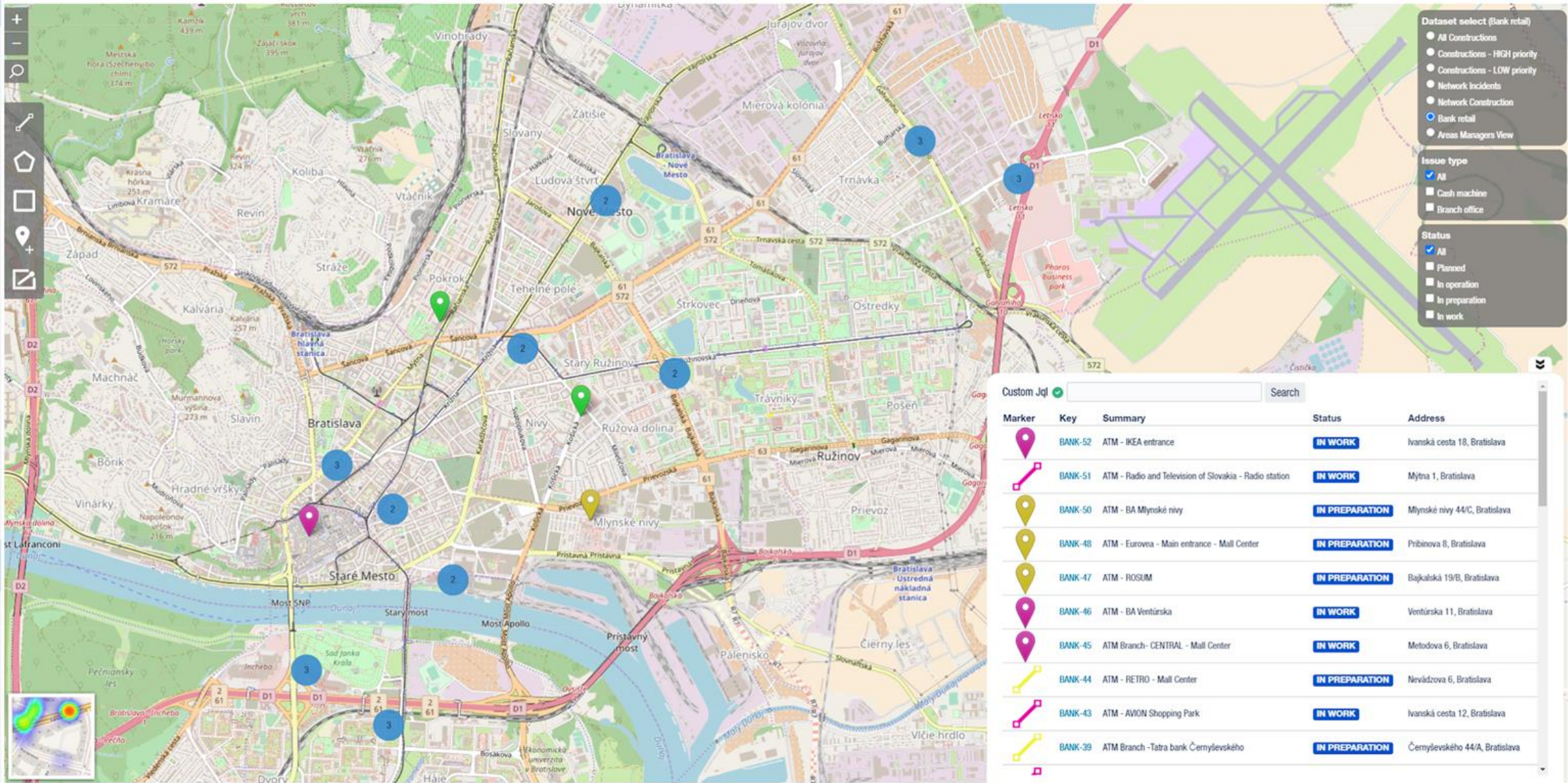
T	Key	Status	Summary	Address	Branch office
+	BANK-52	IN WORK	ATM - IKEA entrance	Ivanská cesta 18, Bratislava	Branch - Aupark - Mall Center
+	BANK-51	IN WORK	ATM - Radio and Television of Slovakia - Radio station	Mýtna 1, Bratislava	Branch - BA Kaštieľska
+	BANK-50	IN PREPARATION	ATM - BA Mlynské nivy	Mlynské nivy 44/C, Bratislava	Branch - Eurovea - Mall Center
+	BANK-49	IN WORK	ATM - BA Pecná cesta	Pecná cesta 3, Bratislava	Branch - BA Račianske myto
+	BANK-48	IN PREPARATION	ATM - Eurovea - Main entrance - Mall Center	Pribinova 8, Bratislava	Branch - Eurovea - Mall Center
+	BANK-47	IN PREPARATION	ATM - ROSUM	Bajkalská 19/B, Bratislava	Branch - Rosum
+	BANK-46	IN WORK	ATM - BA Ventúrska	Ventúrska 11, Bratislava	Branch - BA Račianske myto
+	BANK-45	IN WORK	ATM Branch- CENTRAL - Mall Center	Metodova 6, Bratislava	Branch - CENTRAL - Mall Center
+	BANK-44	IN PREPARATION	ATM - RETRO - Mall Center	Nevádzova 6, Bratislava	Branch - ARAL
+	BANK-43	IN WORK	ATM - AVION Shopping Park	Ivanská cesta 12, Bratislava	Branch - AVION Shopping Bratislava - Mall Center

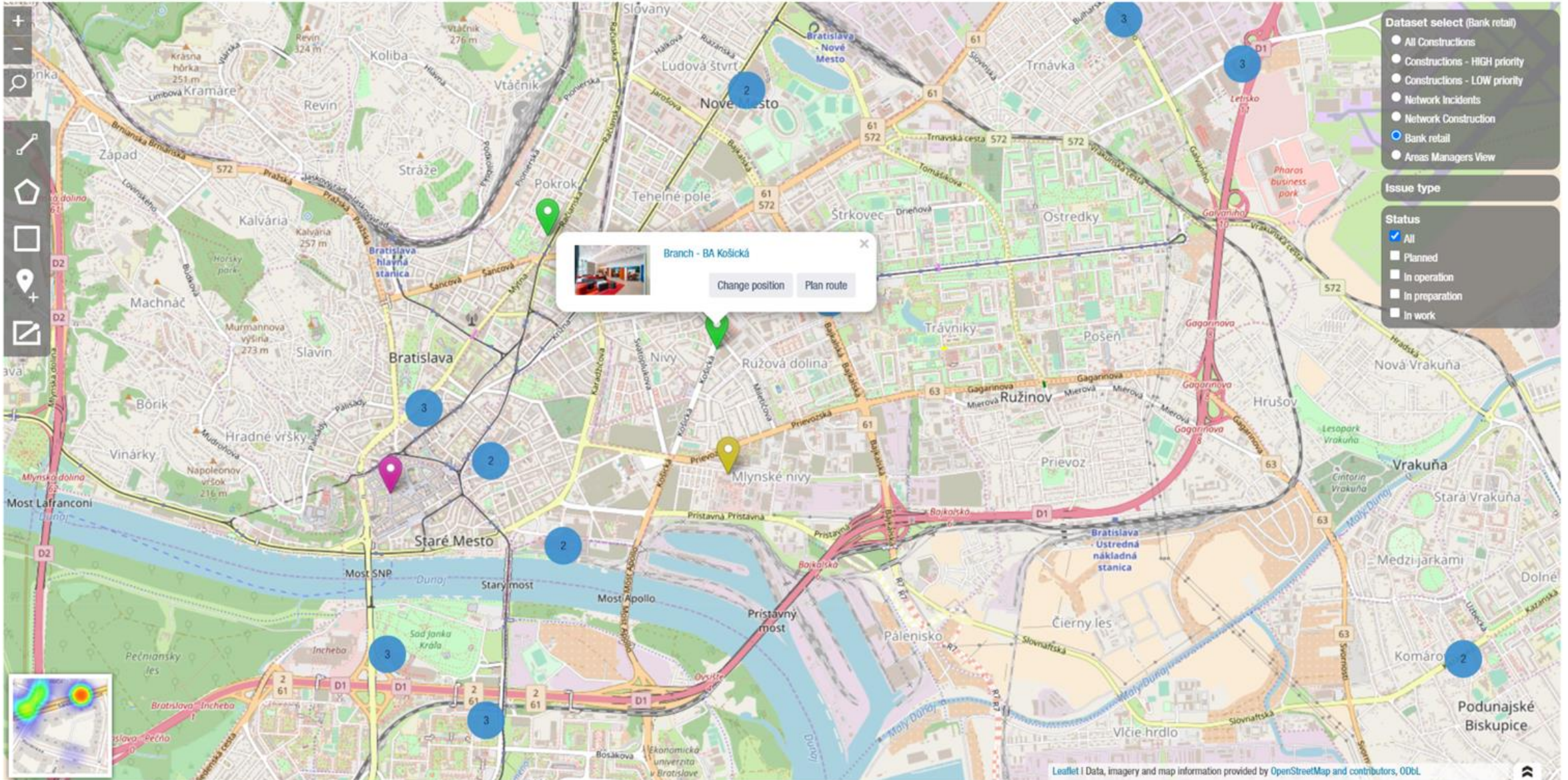
1-10 of 31

Filter Results: All bank offices

T	Key	Status	Summary	Address
+	BANK-22	IN OPERATION	Branch - BA Kazanská	Kazanská 48, Bratislava
+	BANK-21	IN OPERATION	Branch - BA Galvaniho	Galvaniho 2/B, Bratislava
+	BANK-20	IN OPERATION	Branch - VIVO! - Mall Center	Vajnorská 100/A, Bratislava
+	BANK-19	PLANNED	Branch - Aupark - Mall Center	Einsteinova 18, Bratislava
+	BANK-18	PLANNED	Branch - CENTRAL - Mall Center	Metodova 6, Bratislava
+	BANK-17	PLANNED	Branch - Riviera	Karlovska 1, Bratislava
+	BANK-16	PLANNED	Branch - Bory Mall - Mall Center	Lamač 6780, Bratislava
+	BANK-15	IN OPERATION	Branch - BA Kaštieľska	Kaštieľska 1/A, Bratislava
+	BANK-14	IN OPERATION	Branch - TatraCity - Business Center	Černyševského 44/A, Bratislava
+	BANK-13	PLANNED	Branch - AVION Shopping Bratislava - Mall Center	Ivanská cesta 12

1-10 of 21






- Dataset select (Bank retail)**
- All Constructions
 - Constructions - HIGH priority
 - Constructions - LOW priority
 - Network Incidents
 - Network Construction
 - Bank retail
 - Areas Managers View

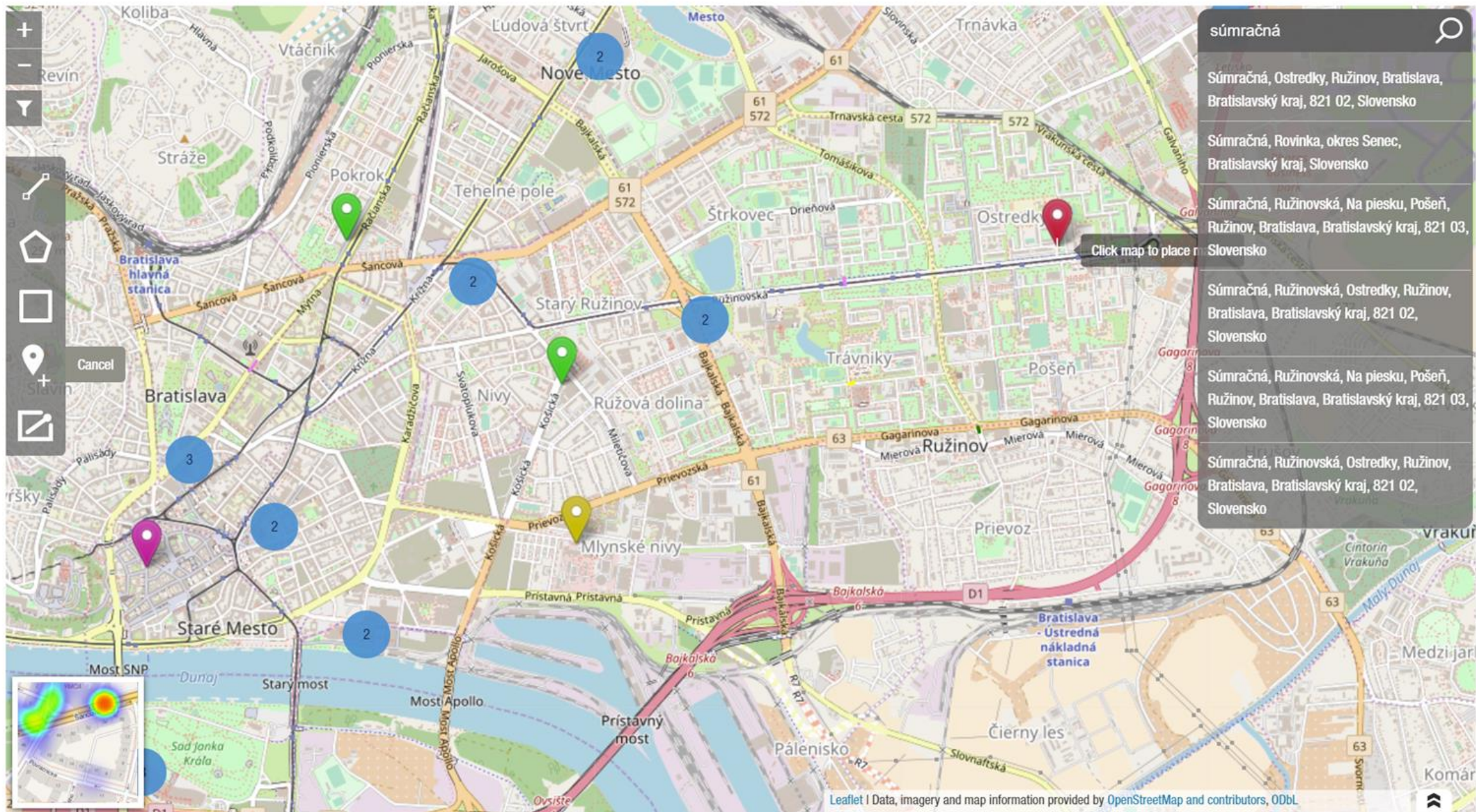
Issue type

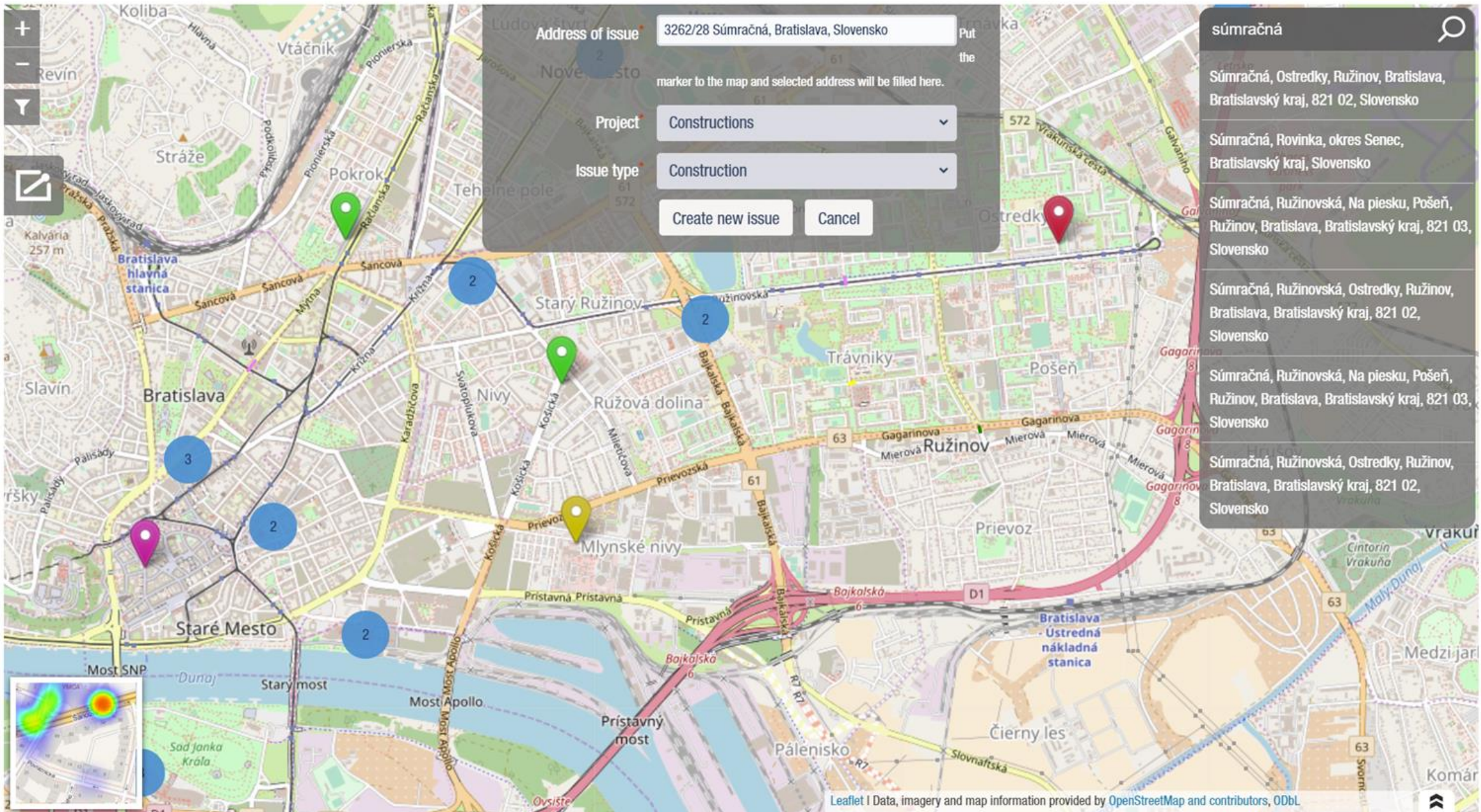
- Status**
- All
 - Planned
 - In operation
 - In preparation
 - In work

Branch - BA Košická



Change position Plan route





Address of issue Put the marker to the map and selected address will be filled here.

Project

Issue type

- súmračná
- Súmračná, Ostredky, Ružinov, Bratislava, Bratislavský kraj, 821 02, Slovensko
 - Súmračná, Rovinka, okres Senec, Bratislavský kraj, Slovensko
 - Súmračná, Ružinovská, Na piesku, Pošeň, Ružinov, Bratislava, Bratislavský kraj, 821 03, Slovensko
 - Súmračná, Ružinovská, Ostredky, Ružinov, Bratislava, Bratislavský kraj, 821 02, Slovensko
 - Súmračná, Ružinovská, Na piesku, Pošeň, Ružinov, Bratislava, Bratislavský kraj, 821 03, Slovensko
 - Súmračná, Ružinovská, Ostredky, Ružinov, Bratislava, Bratislavský kraj, 821 02, Slovensko

View all issues and filters

2 of 6

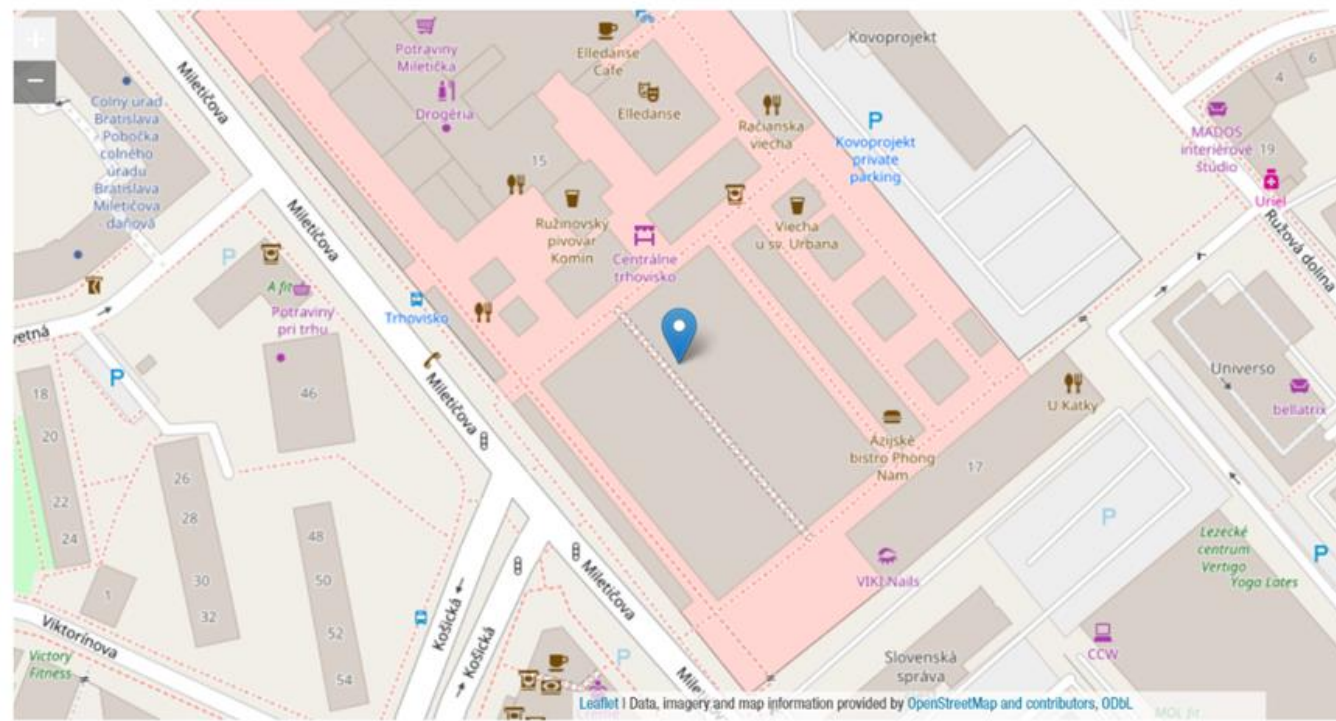
Export

Open issues

Order by Priority

- GP-2 Issue in Poprad
- GP-1 Issue in Bratislava
- GP-3 Issue in Galanta
- GP-6 Issue in Trenčín
- GP-4 Reconstruction in Bratislava
- GP-5 Issue in Šala

Issue location



Close

Activity

All Comments Work Log History Activity

There are no comments yet on this issue.

- Ján Bratislavovič
- Assign to me
- demo administrator
- Stop watching this issue

09/Feb/21 4:34 PM
17/Mar/21 2:06 AM

discussions
Want to discuss this issue? Connect to Hipchat.

Dismiss





GeoData for Jira 

Many ways to **expand** the overview of your tasks



Open issues Switch filter[View all issues and filters](#)

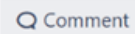
Order by Priority

 GP-2
Issue in Poprad GP-1
Issue in Bratislava GP-3
Issue in Galanta GP-6
Issue in Trenčín GP-4
Reconstruction in Bratislava GP-5
Issue in Šala[+ Create issue](#)

GeoData Project / GP-1

Issue in Bratislava

2 of 6



Assign

More

Start Progress

Done

Admin



Export

Details

Type: Task Status: **TO DO** [\(View Workflow\)](#)

Priority: Highest Resolution: Unresolved

Labels: None

Location: Miletičova, Bratislava, Slovensko

Google Maps: [Show on Google Maps](#)

Cadaster Map: [Show on Cadaster Map](#)

Mapy.cz: [Show on Mapy.cz](#)

Windy.com: [Show weather](#)

Zoom Earth Weather: [Show weather](#)

Description

[Click to add description](#)

Attachments

Drop files to attach, or browse.

Activity

[All](#) [Comments](#) [Work Log](#) [History](#) [Activity](#)

There are no comments yet on this issue.

People

Assignee: Ján Bratislavovič
[Assign to me](#)

Reporter: demo administrator

Watchers: 1 [Stop watching this issue](#)

Dates

Created: 09/Feb/21 4:34 PM

Updated: 17/Mar/21 2:06 AM

Hipchat discussions

Do you want to discuss this issue? Connect to Hipchat.

[Connect](#)[Dismiss](#)

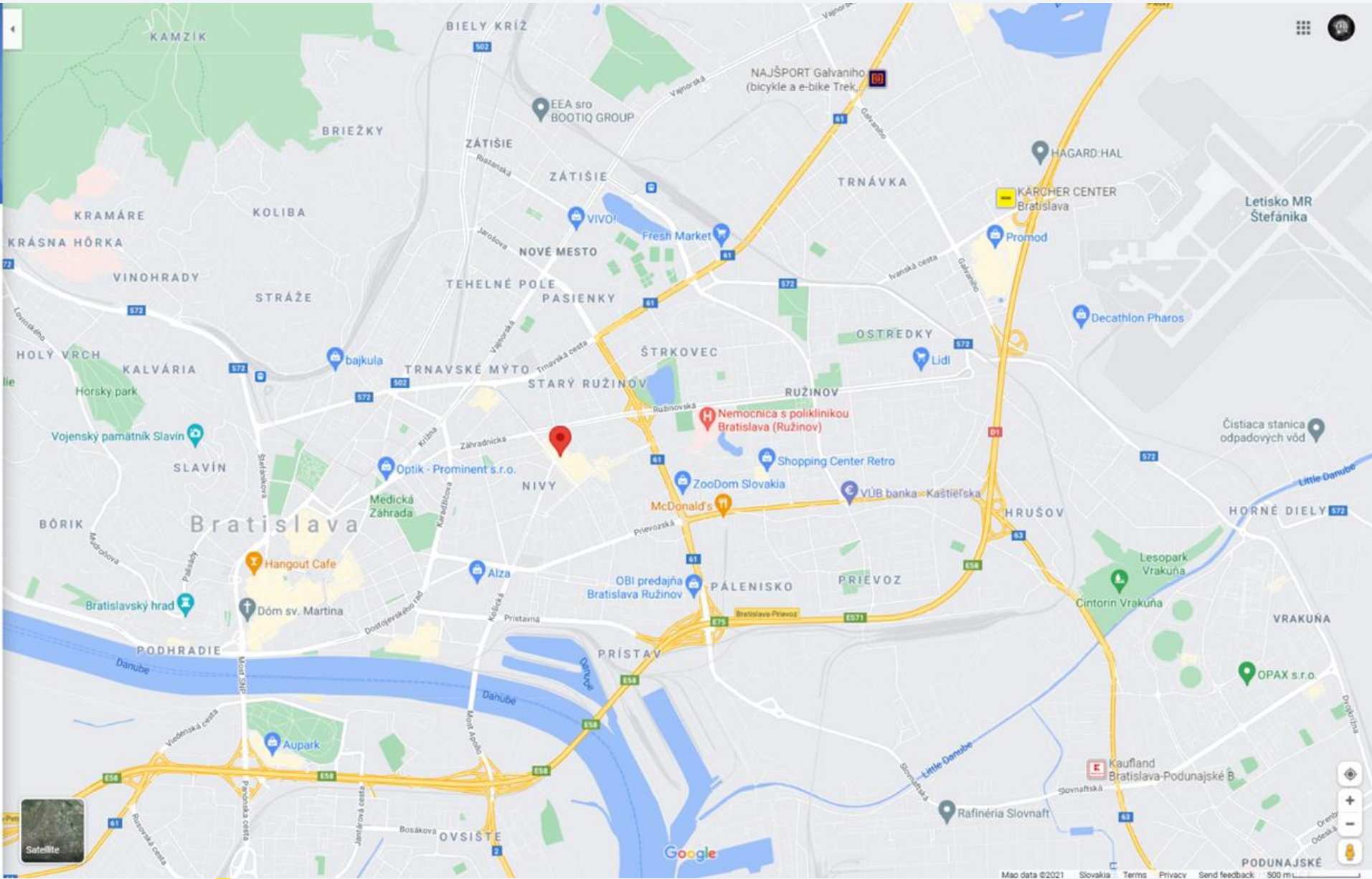
48.153324950424235,17.137030

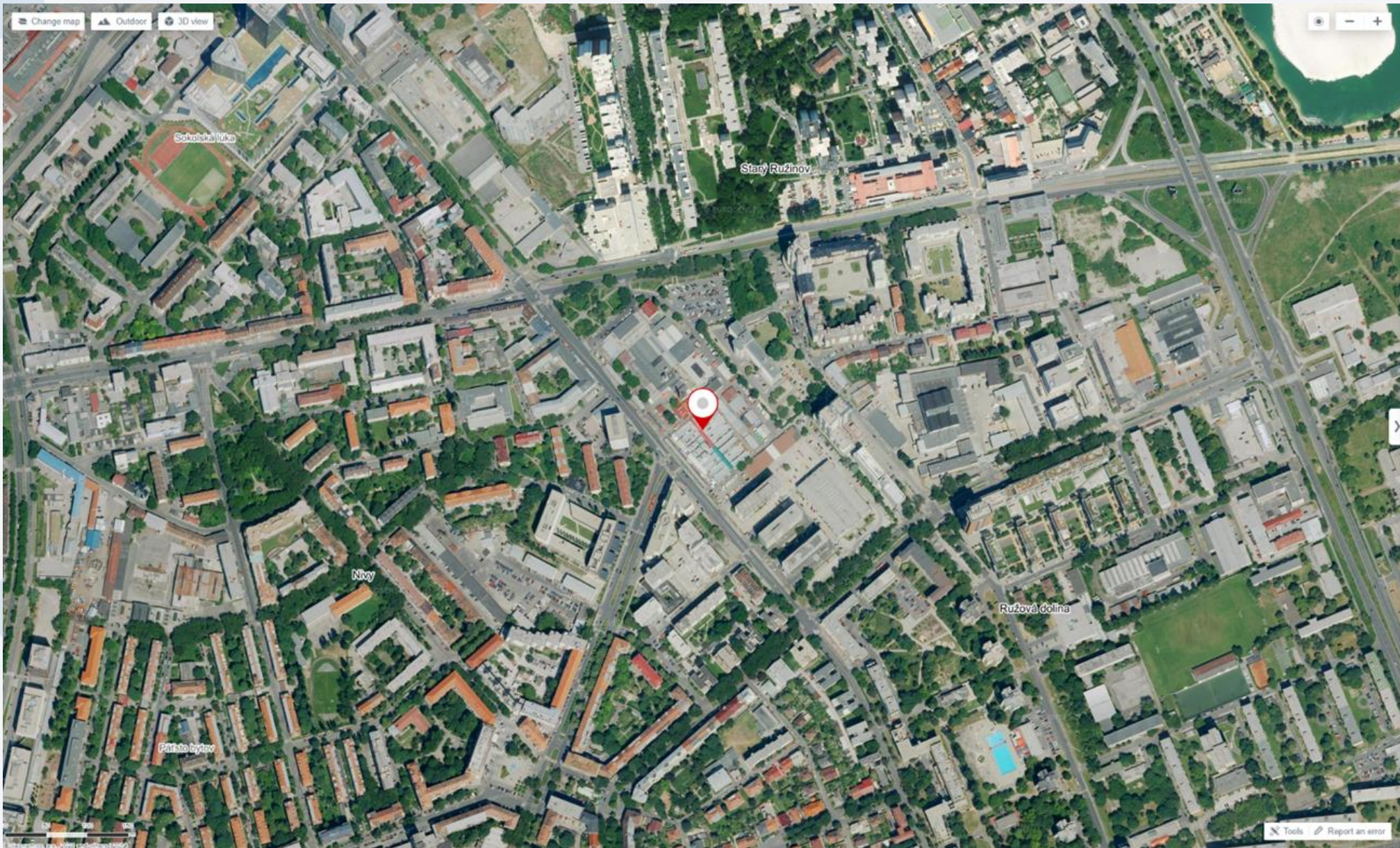


48°09'12.0"N 17°08'13.3"E
48.153325, 17.137030

- Directions
- Save
- Nearby
- Send to your phone
- Share

- 821 08 Bratislava
- 543P+8R Bratislava
- Add a missing place
- Add your business
- Add a label





Search Planning Log in to My maps

Close Add photo

Add photo

By adding photos of this location, you can help others.

3D VIEW

Position on the map

48.1533250N, 17.1370030E

Go to planning Save Share Travel tips

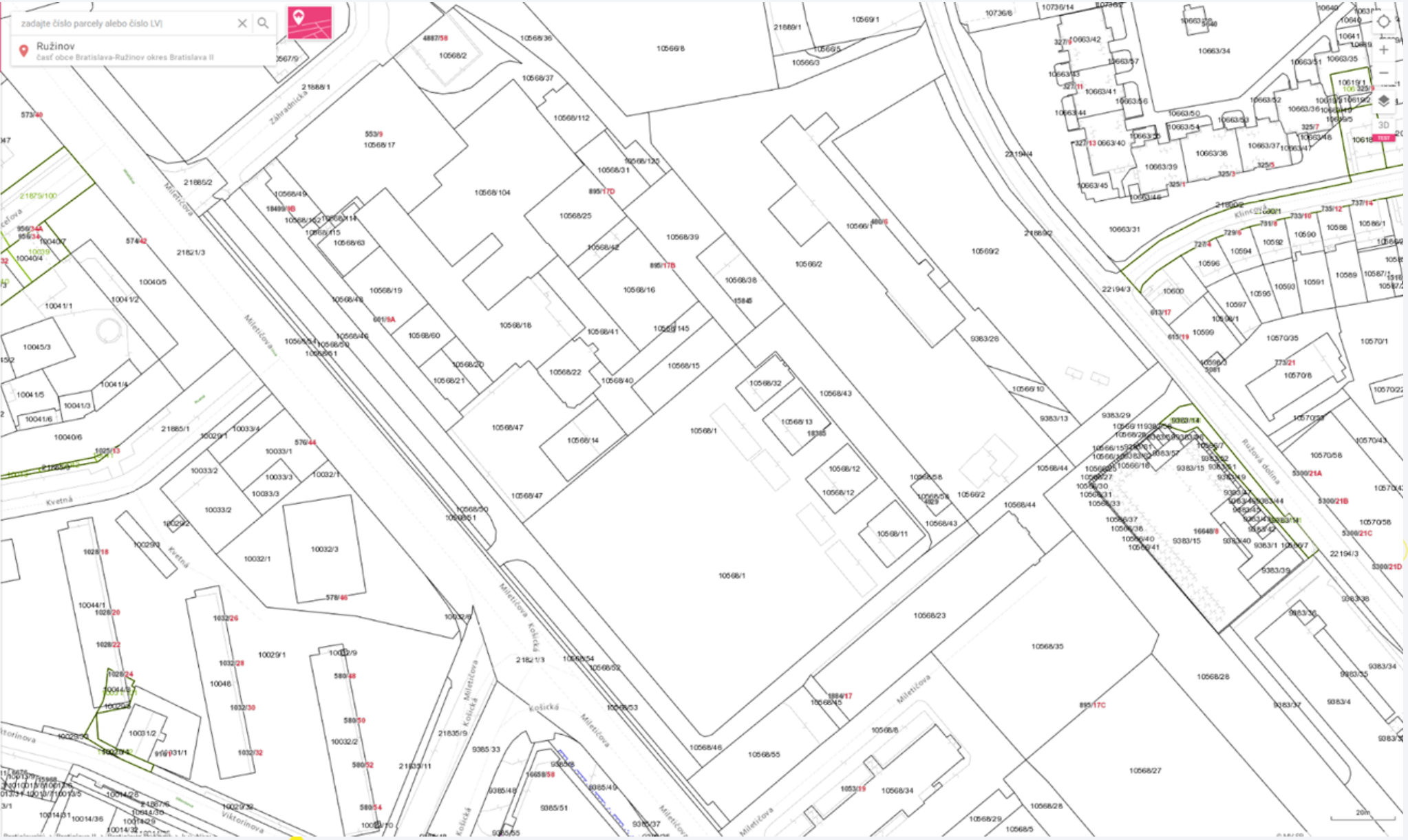
Weather 16°

GPS

Informácie z mapy

BODOM	LÍNIU	OBLASŤOU
S-JTSK (X, Y):	6691098 m	3511570 m
ETRS89-TM34 (E, N):	1891184 m	18 m
WGS84 (lat, lon):	0.000154°	0.000433°
Bpv (H), DMR3:	-	-

Nenašli sa žiadne objekty



ZOOM EARTH

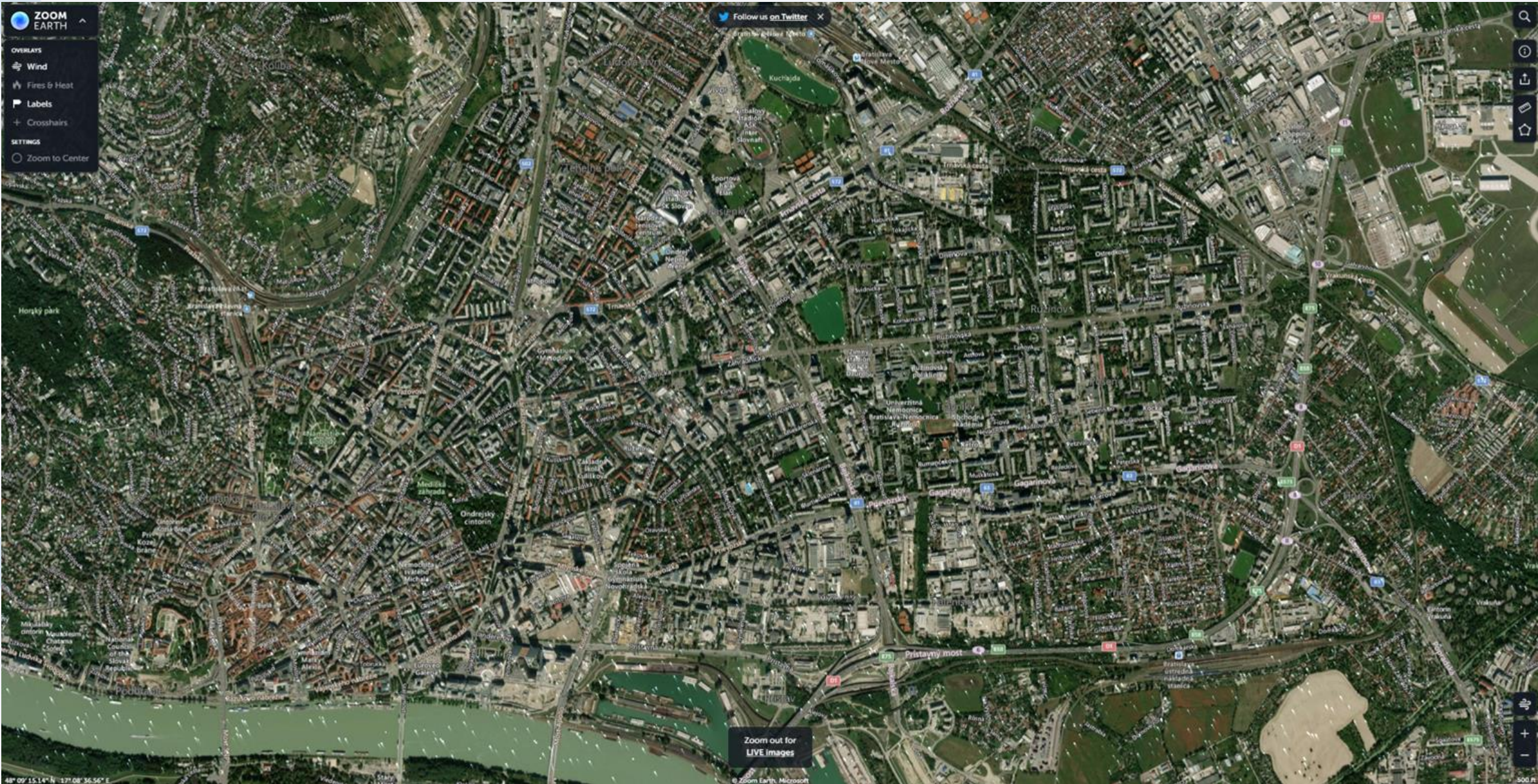
OVERLAYS

- Wind
- Fires & Heat
- Labels
- Crosshairs

SETTINGS

- Zoom to Center

Follow us on Twitter



Zoom out for LIVE images

48° 09' 15.14" N 17° 08' 36.56" E

© Zoom Earth, Microsoft

500 ft



Bank Retail

Summary

Issues

Reports

Objects

PROJECT SHORTCUTS

Add a link to useful information for your whole team to see.

+ Add link

Project settings



Bank Retail / BANK-233

Planned maintenance - Bratislava shopping centres

Edit Comment Assign More ▾ Realize Admin ▾

Export ▾

Details

Type: 🔥 Service Status: SCHEDULE (View Workflow)

Priority: ○ Undefined Resolution: Unresolved

Labels: None

Cash machines: 📍 ATM - OC Galéria - Mall Center 📍 ATM - Aupark - Cinema
📍 ATM - Aupark - Center Mall - NAY entrance
📍 ATM - OD Saratov - Mall Center 📍 ATM - Bory Mall - Mall Center
📍 ATM - AVION Shopping Park 📍 ATM - Eurovea - Main entrance - Mall Center

Route planner: [Google route](#)

Description

Click to add description

Attachments

Drop files to attach, or [browse](#).

Issue Links

relates to

📍 BANK-48 ATM - Eurovea - Main entrance - Mall Center ○ IN PREPARATI...

Activity

People

Assignee: 👤 Unassigned
[Assign to me](#)

Reporter: 👤 demo administrator

Watchers: 1 Stop watching this issue

Dates

Created: 17/Mar/21 8:10 AM

Updated: 15/Apr/21 12:04 PM

Hipchat discussions

Do you want to discuss this issue? Connect to Hipchat.

[Connect](#) [Dismiss](#)

- OD Saratov, Saratovská 13, 841 02 Dúbr
- Panónska cesta, Bratislava
- Aupark, Einateľnova 18, 851 01 Petržalka
- Aupark, Einateľnova 18, 851 01 Petržalka
- Ivanská cesta 12, 821 04 Ružinov
- Pribinova 8, 811 09 Bratislava
- Add destination

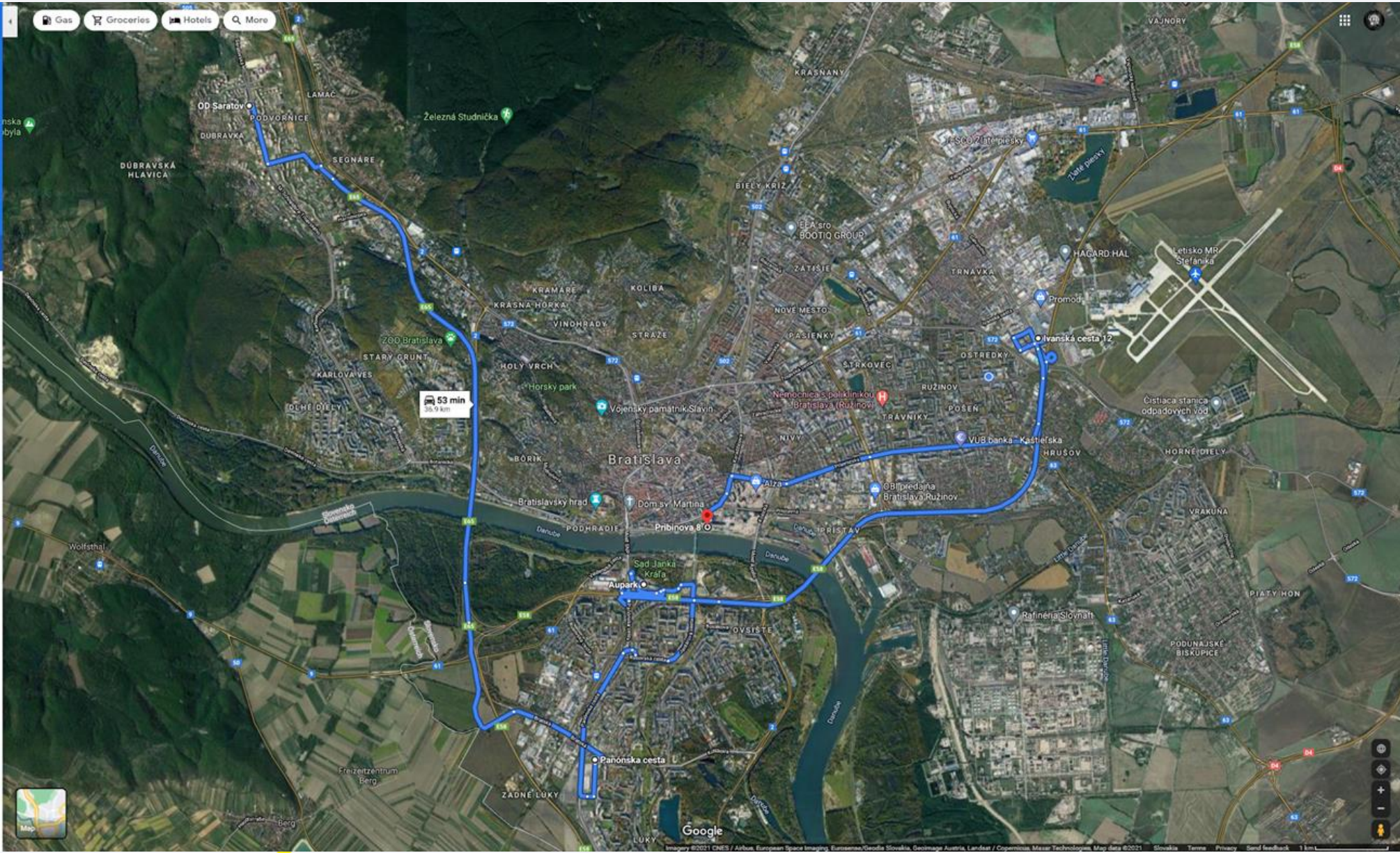
OPTIONS

Send directions to your phone

via E65
53 min without traffic
36.9 km

Explore Pribinova 8

- Restaurants
- Hotels
- Gas stations
- Parking Lots
- More



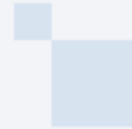
GeoData for Jira 

In the configuration,
you have room to
determine exactly what
you **need**



GeoData for Jira 

Data Sets



ATLASSIAN MARKETPLACE

Find new apps

Manage apps

GEODATA

GeoData configuration

GeoData datasets

GeoData areas

Map View

INSIGHT

Insight Configuration

Indexing Insight

Insight Script Console

Insight reports

Mindville Analytics

SCRIPTRUNNER

Browse

Console

Built-in Scripts

Jobs

Listeners

Fields

Behaviours

Workflows

Fragments

Data sets

+ Create new



All Constructions

Constructions - HIGH priority

Constructions - LOW priority

Network Incidents

Network Construction

Bank retail

Areas Managers View

Bank retail

Map view

Set default

Edit

Delete

Data source

JQL filter

All Bank offices and cash machines
Edit filter permissions

Fields

Dataset fields

Address
Summary

Categories

Categories

Issue type
Status

Values

Issue type

Cash machine Branch office

Status

Planned In operation In preparation
In work

Color scheme

Path

fields.status.id

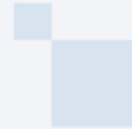
Color mapping

10600 orange
10601 green
10602 yellow
10603 violet



GeoData for Jira 

Custom fields





Administration 🔍 Search Jira admin

🔔 [Back to project: Constructions](#)

Applications Projects **Issues** Manage apps User management Latest updates System Configuration Manager

- ISSUE TYPES
 - Issue types
 - Issue type schemes
 - Sub-tasks
- WORKFLOWS
 - Workflows
 - Workflow schemes
- SCREENS
 - Screens
 - Screen schemes
 - Issue type screen schemes
- FIELDS
 - Custom fields**
 - Field configurations
 - Field configuration schemes
- PRIORITIES
 - Priorities
 - Priority schemes
- ISSUE FEATURES
 - Time tracking
 - Issue linking

Custom fields

Add extra fields to your issues and manage your existing custom fields.

Name

Address (10401)

Approvals (10200) LOCK
Provides search options for Jira

Approvers (10601)
Contains users needed for approvals

Branch office (10809)

Cadaster Map (10804)

Cash machine (10810)

Cash machines (10817)

Connected items (10602)

Construction (10400)

Construction category (10307)

Construction end (10303)

Select a Field Type

- All
- Standard
- Advanced

- No field preview

GeoData Insight Link Custom field
The custom field reads value of Insight object(s) referenced in Insight custom field(s) and shows link with predefined pattern.
- No field preview

GeoData Location
GeoData Location custom field
- No field preview

GeoData Location Link Custom field
The custom field reads value of GeoData Location custom field and shows link with predefined pattern.
- No field preview

GeoData Slovak Cadaster Custom field
The custom field reads value of GeoData Location custom field and shows link to the Slovak cadaster website.

[Find more custom fields](#)

Next Cancel

Add custom field

configure how they're displayed to your users. Here you can

Screens	Actions
7 screens	▾
0 screens	▾
0 screens	▾
4 screens	▾
3 screens	▾
1 screen	▾
1 screen	▾
1 screen	▾
1 screen	▾
3 screens	▾
1 screen	▾



GeoData Location Custom field

Administration

Search Jira admin

Back to project: Constructions

Applications Projects **Issues** Manage apps User management Latest upgrade report System Configuration Manager

ISSUE TYPES

Issue types

Issue type schemes

Sub-tasks

WORKFLOWS

Workflows

Workflow schemes

SCREENS

Screens

Screen schemes

Issue type screen schemes

FIELDS

Custom fields

Field configurations

Field configuration schemes

PRIORITIES

Priorities

Priority schemes

ISSUE FEATURES

Time tracking

Issue linking

ISSUE ATTRIBUTES

Statuses

Modify configuration scheme context

Configuration contexts enable the custom field for that particular set of issues and each context can have its own configuration set (e.g. different default values, options).

Custom Field Address

Configuration scheme label

Label for this context

Description

Optional description for this context

Choose applicable issue types

Please select the applicable issue types. This will enable the custom field for these issues types in the context specified below.

Issue types Any issue type
 Task
 Sub-task
 Network construction
 Network maintenance

Apply for all issues with any selected issue types

Choose applicable context

Please choose the contexts where this configuration will be applicable. Note that this will apply to only issues with the selected issue type as above.

- Global context** Apply to all issues in Jira.
 Apply to issues under selected projects

Projects
Constructions
GeoData Project
Network
Network Incidents

Apply for all issues in any selected projects

GeoData Location Link Custom field



Administration

Search Jira admin



Back to project: Constructions

Applications Projects **Issues** Manage apps User management Latest upgrade report System Configuration Manager

ISSUE TYPES

Issue types

Issue type schemes

Sub-tasks

WORKFLOWS

Workflows

Workflow schemes

SCREENS

Screens

Screen schemes

Issue type screen schemes

FIELDS

Custom fields

Field configurations

URL pattern configuration action

Set the URL pattern for custom field: Google Maps

Link text

URL pattern:

Link to the external service. Use \${longitude} and \${latitude} variables in your URL pattern.

Coordinate system:

Location field:

Custom field of GeoData Location type which will be used as a source of location (coordinates).



GeoData Insight Link Custom field



Administration

Search Jira admin



Back to project: Constructions

Applications Projects **Issues** Manage apps User management Latest upgrade report System Configuration Manager

- ISSUE TYPES
 - Issue types
 - Issue type schemes
 - Sub-tasks
- WORKFLOWS
 - Workflows
 - Workflow schemes
- SCREENS
 - Screens
 - Screen schemes
 - Issue type screen schemes
- FIELDS
 - Custom fields**
 - Field configurations
 - Field configuration schemes
- PRIORITIES
 - Priorities
 - Priority schemes
- ISSUE FEATURES
 - Time tracking
 - Issue linking

URL pattern configuration action

Set the URL pattern for custom field: Route planner

Link text

URL pattern:

Link to the external service. Use %(objects:...|x) placeholder for object. Replace inner part with any string which may contains any Insight object attributes in form of \${AttributeName}. Any character(s) after the pipe symbol will be inserted between pattern for objects if multiple objects will be set in a custom field. E.g., https://www.example.org/%(objects:\${FirstAttribute}, \${SecondAttribute})-).

Referenced custom fields:

- Branch office (customfield_10809)
- Cash machine (customfield_10810)
- Cash machines (customfield_10817)**
- Connected items (customfield_10602)
- Construction (customfield_10400)

Custom fields of Insight type which will be used as a source of objects.





GeoData for Jira 

Areas & Automation



Areas



Slovensko

weight: 1000

Trnavský kraj

weight: 900

okres Bánovce nad Bebravou

weight: 500

Prešovský kraj

weight: 900

okres Banská Štiavnica

weight: 500

okres Banská Bystrica

weight: 500

Banskobystrický kraj

weight: 900

Trenčiansky kraj

weight: 900

Košický kraj

weight: 900

Nitriansky kraj

weight: 900

Žilinský kraj

weight: 900

okres Bardejov

weight: 500

okres Bratislava I

weight: 0

okres Bratislava II

weight: 0

okres Bratislava III

weight: 0

Slovensko

Description

Details

Weight: 1000

Mappings

No mappings.

Related areas

Geometry

```
{ "type": "Polygon", "coordinates": [ [ [ 16.841311, 48.360932 ], [ 16.833420, 48.381541 ], [ 16.850472, 48.383162 ], [ 16.855954, 48.396243 ], [ 16.850572, 48.410028 ], [ 16.863750, 48.419343 ], [ 16.850008, 48.449159 ], [ 16.863119, 48.453035 ], [ 16.859476, 48.459367 ], [ 16.880601, 48.477399 ], [ 16.889987, 48.476360 ], [ 16.895645, 48.496473 ], [ 16.916857, 48.495347 ], [ 16.913914, 48.511954 ], [ 16.922150, 48.513430 ], [ 16.921267, 48.520117 ], [ 16.943554, 48.521706 ], [ 16.940435, 48.527232 ], [ 16.953612, 48.542280 ], [ 16.935799, 48.570849 ], [ 16.933648, 48.601119 ], [ 16.969175, 48.644944 ], [ 16.967876, 48.668566 ], [ 16.997321, 48.691747 ], [ 16.997792, 48.708834 ], [ 17.012429, 48.718231 ], [ 17.043736, 48.764703 ], [ 17.089110, 48.786001 ], [ 17.105537, 48.806874 ], [ 17.111268, 48.831481 ], [ 17.154114, 48.844807 ], [ 17.201998, 48.878149 ], [ 17.277958, 48.860306 ], [ 17.306008, 48.843589 ], [ 17.321665, 48.845298 ], [ 17.324750, 48.836248 ], [ 17.361321, 48.813516 ], [ 17.378461, 48.819187 ], [ 17.396854, 48.813324 ], [ 17.453191, 48.846744 ], [ 17.477487, 48.841325 ], [ 17.509805, 48.819600 ], [ 17.519061, 48.829299 ], [ 17.515962, 48.817816 ], [ 17.528483, 48.812160 ], [ 17.553021, 48.819760 ], [ 17.548251, 48.827435 ], [ 17.554571, 48.831557 ], [ 17.588887, 48.825187 ], [ 17.601852, 48.840898 ], [ 17.620949, 48.842023 ], [ 17.632981, 48.854890 ], [ 17.703336, 48.860022 ], [ 17.782665, 48.916690 ], [ 17.781318, 48.925275 ], [ 17.885311, 48.927677 ], [ 17.903038, 48.964181 ], [ 17.903066, 48.982620 ], [ 17.914474, 48.996422 ], [ 17.913837, 49.010906 ], [ 17.924300, 49.019966 ], [ 17.990900, 49.028494 ], [ 18.024472, 49.021230 ], [ 18.057123, 49.028505 ], [ 18.095471, 49.059243 ], [ 18.091650, 49.067435 ], [ 18.115548, 49.090081 ], [ 18.110270, 49.113551 ], [ 18.122208,
```

+ Create new area

Edit area

Delete area



GeoData for Jira **CLOUD**

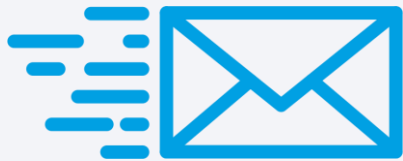


Under development – **COMING SOON**

GeoData for Jira 

Time for Questions & Answers

if you can't think of anything right now
do not hesitate to contact us with any
question



<- Click here



THANK YOU

Atlassian Marketplace :
<https://tinyurl.com/svz8kafu>

Demo Server

<https://geodata.eea.sk>

User : demo-user

Password : demo-user

Documentation

<https://eea-sk.atlassian.net/wiki/spaces/GFJ/overview>

Blog about GeoData for Jira

<https://www.eea.sk/en/projects/app-geodata-for-jira/>



Gold
Solution Partner



BOOT!Q